

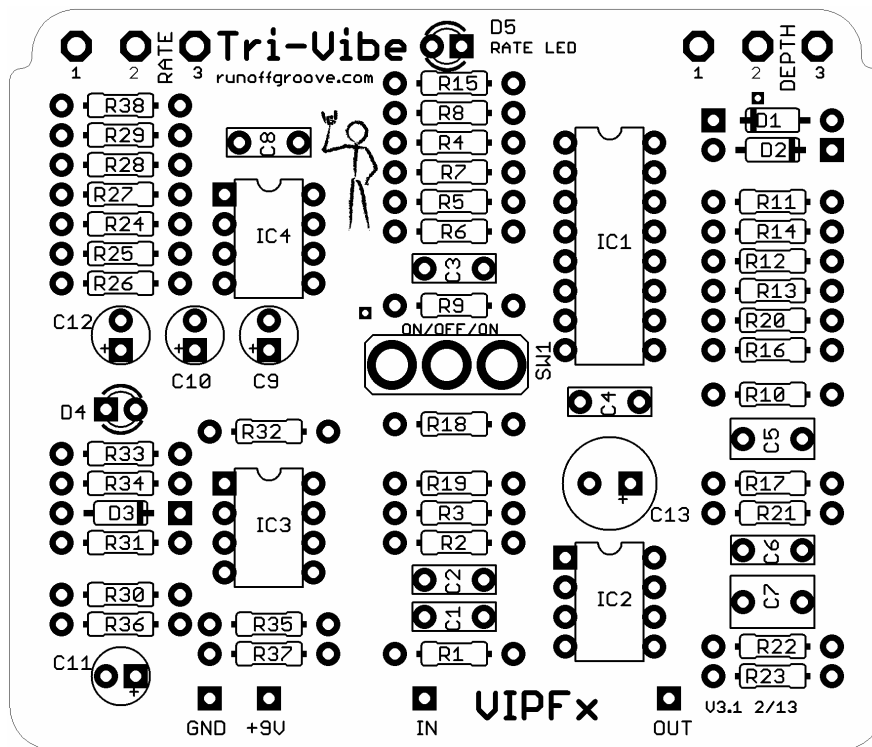
# Tri-Vibe

## Modulation

This is the Tri-Vibe from Runoffgroove.com.

<http://www.runoffgroove.com/tri-vibe.html>

See the Runoffgroove build page for the necessary notes to complete the build. This is a well established project with a lot of support available in the forums and in particular DIYStompboxes.com



### Parts Guide

Resistors: 1/4 watt metal film

Film Caps: The board is laid out for Panasonic ECQ-V caps, but any standard 5mm caps will fit.

Electrolytic Caps: 16v or better

pF Caps: Ceramic or other 5mm caps

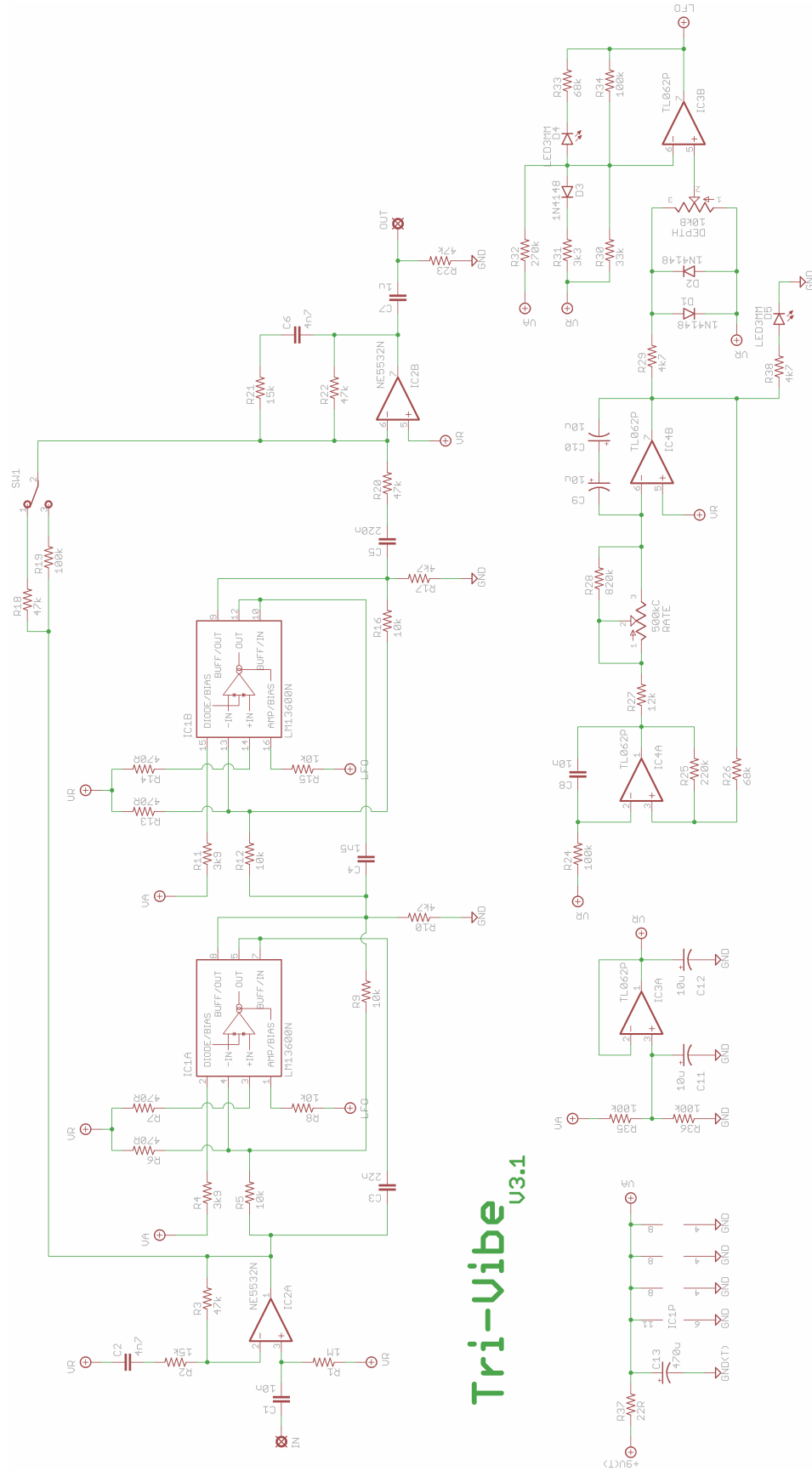
Pots: Layout is for Alpha PCB mount pots, RV16AF-41-15R1-Value, but any pots will work.

## BOM

Resistors		Caps		Diodes	
R1	1M	C1	10n	D1	1N4148
R2	15k	C2	4n7	D2	1N4148
R3	47k	C3	22n	D3	1N4148
R4	3k9	C4	1n5	D4	LED3MM
R5	10k	C5	220n	D5	LED3MM
R6	470R	C6	4n7		
R7	470R	C7	1u		
R8	10k	C8	10n	<b>IC's</b>	
R9	10k	C9	10u	IC1*	LM13600N
R10	4k7	C10	10u	IC2	NE5532N
R11	3k9	C11	10u	IC3	TL062P
R12	10k	C12	10u	IC4	TL062P
R13	470R	C13	470u		
R14	470R			<b>Switch</b>	
R15	10k			SPDT	On/Off/On
R16	10k				
R17	4k7			<b>Pots</b>	
R18	47k			DEPTH	10kB
R19	100k			RATE	500kC
R20	47k				
R21	15k				
R22	47k				
R23	47k				
R24	100k				
R25	220k				
R26	68k				
R27	12k				
R28	820k				
R29	4k7				
R30	33k				
R31	3k3				
R32	270k				
R33	68k				
R34	100k				
R35	100k				
R36	100k				
R37	22R				
R38	4k7				

\* Among others, the NJM13600D available at Small Bear is a suitable replacement.

Schematic

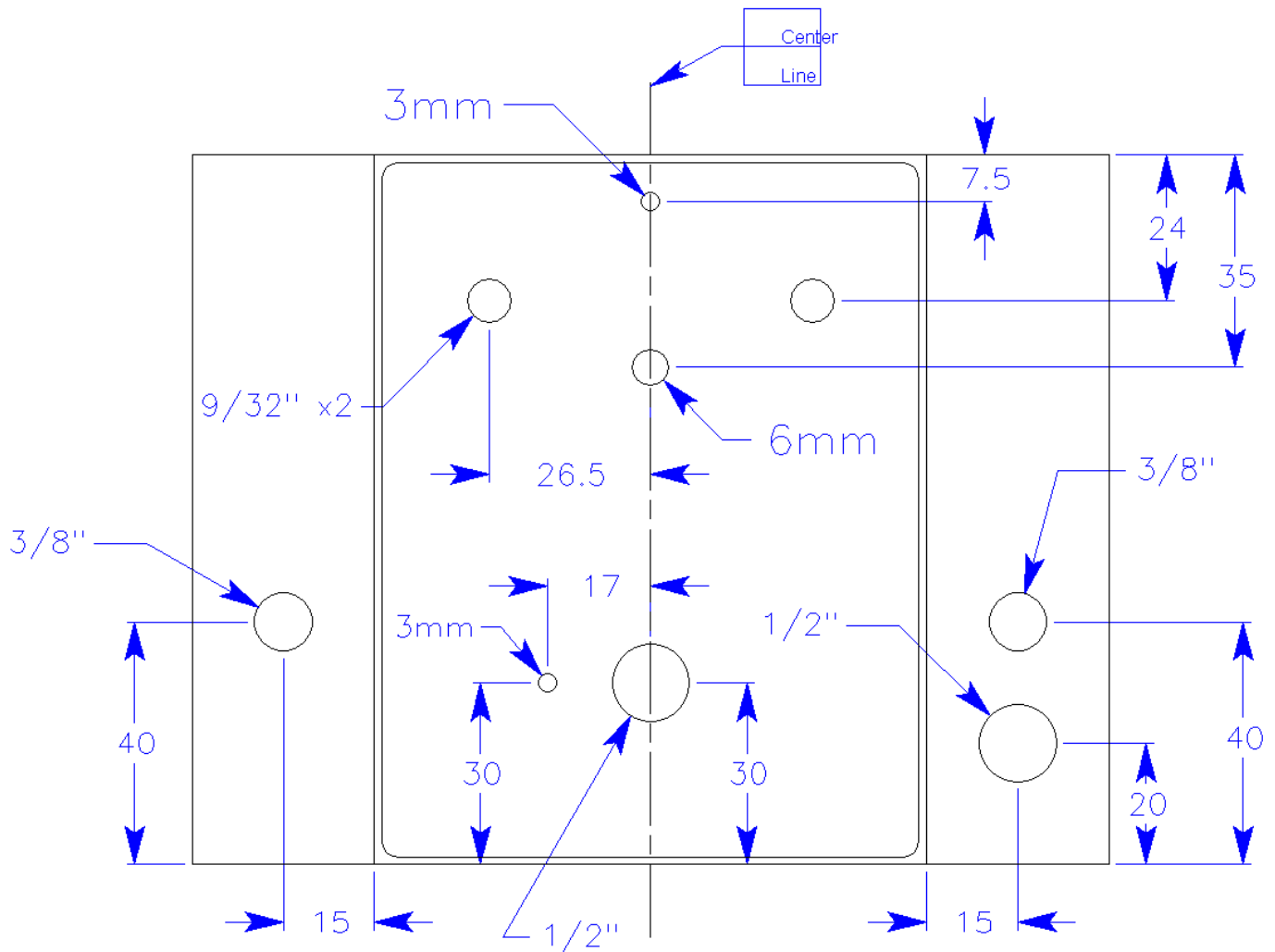


Tri-Vibe U3.1

This product is intended for DIY use only. Commercial use, including the sale of PCBs, kits or pedals utilizing this information, is strictly prohibited.

### Drill Template

This is the drill template I used to order my box from Pedal Parts Plus. The box I specified was their 4-Site 1590, code 1104.



This product is intended for DIY use only. Commercial use, including the sale of PCBs, kits or pedals utilizing this information, is strictly prohibited.